



# 2025



**January 2nd to 6th in Benidorm,  
Alicante, Spain**

# THE LEAGUE

The **Mediterranean Winter League** is an innovative international competition designed to foster the development of young football talents. This tournament gathers some of the most prominent teams from around the world, offering players a unique opportunity to showcase their skills and compete at the highest level. The experience of playing in Europe and facing elite teams is crucial for those who aspire to a career in professional football.

The tournament will be held from **January 2nd to 6th, 2025**. Our aim is to promote camaraderie and contribute to the personal and athletic growth of young aspiring footballers through two key experiences:

- Living away from home, as part of a sports training camp.
- Participating in a football-centered experience that combines training and competition.

For the participants, this league is not only an exciting leisure opportunity but also a chance to develop in a new and thrilling environment, fully immersed in the sport they have chosen and love.

## OFFICIAL SCHEDULE

### Thursday, January 2nd

- Arrival of teams at the hotel.
- Lunch at the hotel.
- League matches.
- Dinner at the hotel.

### Friday, January 3rd

- Breakfast at the hotel.
- Arrival of teams.
- *Clinic.*
- Lunch at the hotel.
- League matches.
- Dinner at the hotel.

### Saturday, January 4th

- Breakfast at the hotel.
- League matches.
- Lunch at the hotel.
- League matches.
- Dinner at the hotel.

### Sunday, January 5th

- Breakfast at the hotel.
- Semifinals and Finals.
- *Trophy and award presentation.*
- Departure of some teams.
- Lunch at the hotel.
- Free afternoon.
- Dinner at the hotel.

### Monday, January 6th

- Breakfast at the hotel.
- *Clinic.*
- Lunch (optional upon request).
- End of services.

# EXPERIENCE THE THRILL

## 11-A-SIDE FOOTBALL FORMAT

### FEATURES

- Match duration: 2 halves of 25 minutes in all phases.
- Each team will play a minimum of 4 matches.
- Depending on your standings, you will advance to the final stages.

### + CATEGORIES

- SUB19 Born in 2006 - 2007 - 2008
- SUB16 Born in 2009 - 2010
- SUB14 Born in 2011 - 2012



### • AWARDS PRESENTATION

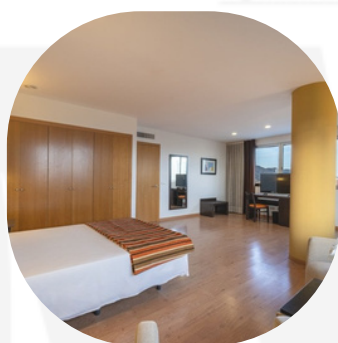
As a final event, there will be an awards presentation and a commemorative gift for all participants.

# HOTELS

## EXCLUSIVE FOR PLAYERS AND COACHES

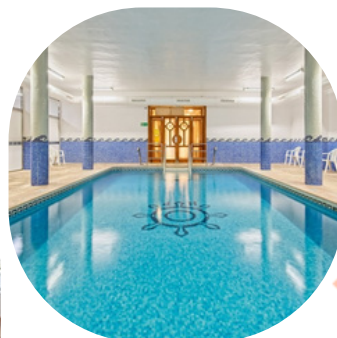
### HOTEL LA ESTACIÓN

Hotel La Estación brings comfort within everyone's reach. Located just a step away from the center of Benidorm, our hotel is within close proximity to both the beach and the city's most iconic theme parks. Explore all that Benidorm has to offer and stay in one of the city's best-connected hotels.



### HOTEL POSEIDÓN RESORT

Hotel Poseidón Resort is located in the heart of Benidorm. You'll be just a few meters away from all its most iconic spots and the stunning, award-winning Levante and Poniente beaches. All rooms are fully equipped and designed to let in plenty of sunlight, giving them a bright and inviting appearance.

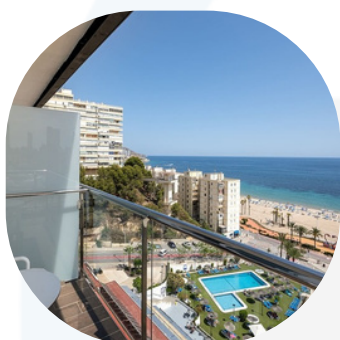


# HOTELS

## EXCLUSIVE FOR PLAYERS AND COACHES

### HOTEL POSEIDÓN PLAYA

Waking up in the rooms at Hotel Poseidón Playa is a true gift, as you can enjoy unique views of the Mediterranean Sea right at your feet. Additionally, you can savor iconic Mediterranean cuisine at our buffet restaurant, where breakfast, lunch, and dinner await you.



MEDITERRANEAN WINTER LEAGUE  
COSTA BLANCA - ALICANTE - SPAIN

### HOTEL MELINA BENIDORM

Waking up in the rooms at Hotel Poseidón Playa is a true gift, as you can enjoy unique views of the Mediterranean Sea right at your feet. Additionally, you can savor iconic Mediterranean cuisine at our buffet restaurant, where breakfast, lunch, and dinner await you.



# SPORTS FACILITIES

## ANTONIO LÓPEZ GUERRERO FOOTBALL PITCHES

- 2 11-a-side football pitches
- Synthetic grass
- Showers
- Changing rooms



## GUILLERMO AMOR SPORTS CITY

- 1 11-a-side football pitch
- Natural grass
- Showers
- Changing rooms



# PRICES AND REGISTRATIONS



## PRICES FOR LOCAL TEAMS (Vega Baja Only)

**450€ PER TEAM**

If any team wishes to book a hotel night, they can request it at a rate of €85 per night per person, with a minimum of 3 players.

### What does the price include?

- Guaranteed league-format matches.
- **Injury insurance during tournament matches.**
- Water service at all matches.
- **Physiotherapists on-site and private ambulance** available for the tournament.
- **Trophies for champions**, runners-up, and best players in each category.
- Use of sports facilities.
- **Referees accredited by the FFCV and RFEF.**

## REGISTRATIONS FOR LOCAL TEAMS (VEGA BAJA ONLY, REGISTRATION UPON REQUEST)



### Registration Opening Date:

September 1, 2024

### Registration Deadline:

November 30, 2024

### How to Register:

Complete the registration form on the official tournament website:

**[www.mediterraneanwinterleague.com](http://www.mediterraneanwinterleague.com)**

### Payment Method:

Full payment is due upon receiving the confirmation email. If you need any rooms in accommodations, you must request them at the time of registration and wait for the organization to approve availability. Once approved, the corresponding payment must be made immediately.



# PRICES AND REGISTRATIONS

## VISITING TEAMS

### 3\* and 4\* HOTEL

H. LA ESTACIÓN - H. POSEIDÓN RESORT - H. POSEIDÓN PLAYA - H. MELINA BENIDORM

<b>Price per player WITH HOTEL:</b>	<b>435€ (5 days / 4 nights)</b>
<b>Price per player WITHOUT HOTEL:</b>	<b>250€</b>
<b>Price per player with hotel WITHOUT CLINIC:</b>	<b>385€ (5 days / 4 nights)</b>

All rooms for athletes will be shared by a minimum of 2 players, with most available accommodations being for 3 to 5 players. If a single room is requested for any reason, an additional fee of €50 per night will apply.\*

All prices are for Full Board, with the first meal being lunch on the arrival day and the last meal being breakfast on the departure day. Lunch on the departure day is optional. Full Board will be provided at the selected accommodations.\*

### What does this price include?

- Assigned accommodation for each player.\*
- **Full board at the hotels.\***
- **Injury insurance during tournament matches.**
- Water service at all matches.
- **Physiotherapists at sports facilities and a private ambulance** exclusively for the tournament.
- **Trophies for champions**, runners-up, and best players in each category.
- Use of sports facilities.
- **Referees accredited by the FFCV and RFEF.**

**\*FOR HOTEL GUESTS ONLY**

## REGISTRATIONS FOR VISITING TEAMS



### Registration Opening Date:

September 1, 2024

### Registration Deadline:

November 30, 2024

### How to Register:

Complete the registration form on the official tournament website:

**[www.mediterraneanwinterleague.com](http://www.mediterraneanwinterleague.com)**

### Payment Method:

**To be arranged with the organization.**





# BUS SERVICE

For teams without their own bus, the organization offers an **Official Transport Service** at their disposal.

## **Includes:**

Shuttle transfer to all official matches: constant departures from the hotel to the sports facilities and return for teams with matches.

**Price: €65 per person.**

**Official Transfer Service: €450 per service. Round trip.**

Origin: Alicante Airport, AVE Alicante, or Alicante Bus Station.

Destination: Hotel.

Teams from Spain or Europe wishing to attend the tournament with a bus from the Official Tournament Bus Service can request a quote from the organization via email at [mwl@viajarfutbolbase.com](mailto:mwl@viajarfutbolbase.com).

MEDITERRANEAN WINTER LEAGUE  
COSTA BLANCA - ALICANTE - SPAIN





# LEGISLATION AND INSURANCE

The **Mediterranean Winter League** has contracted the services of the travel agency "Viajar Fútbol Base" (Viajes y Eventos Travel Spain S.L.L.) in accordance with Spanish legislation to provide the combined travel services included in this event's program.

**All athletes will be covered by a sports injury insurance for their activities and a travel insurance that covers them from the moment they leave their usual residence until their return.** These insurances are included in the prices listed in this document. Likewise, accompanying persons and coaches will also be covered by the same combined travel insurance, which is included in their respective prices.

These policies will be issued nominatively and will be available to all athletes, coaches, and accompanying persons in the days leading up to the trip, once all payments have been made.

Cancellation insurance and extended travel insurance can also be purchased. To do so, a request must be made to the organization, as these **additional insurances are not included in the price.**

MEDITERRANEAN WINTER LEAGUE  
COSTA BLANCA - ALICANTE - SPAIN

## INFORMATION



**Commercial Information and Registration Phone Number**  
**+34 676 63 62 11**

**[mwl@viajarfutbolbase.com](mailto:mwl@viajarfutbolbase.com)**  
**[www.mediterraneanwinterleague.com](http://www.mediterraneanwinterleague.com)**